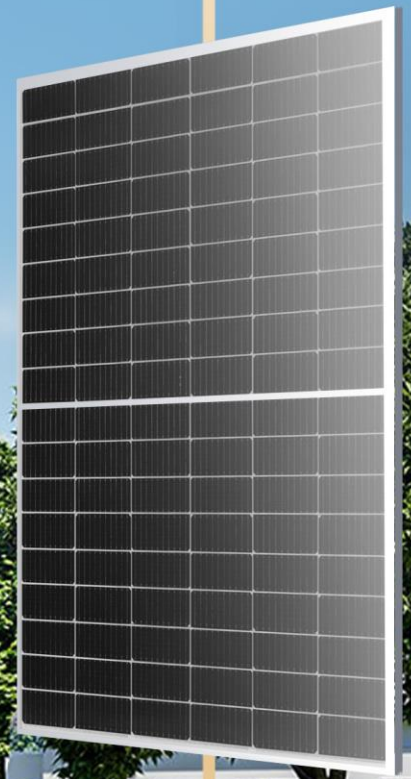


TIGER PRO 415W

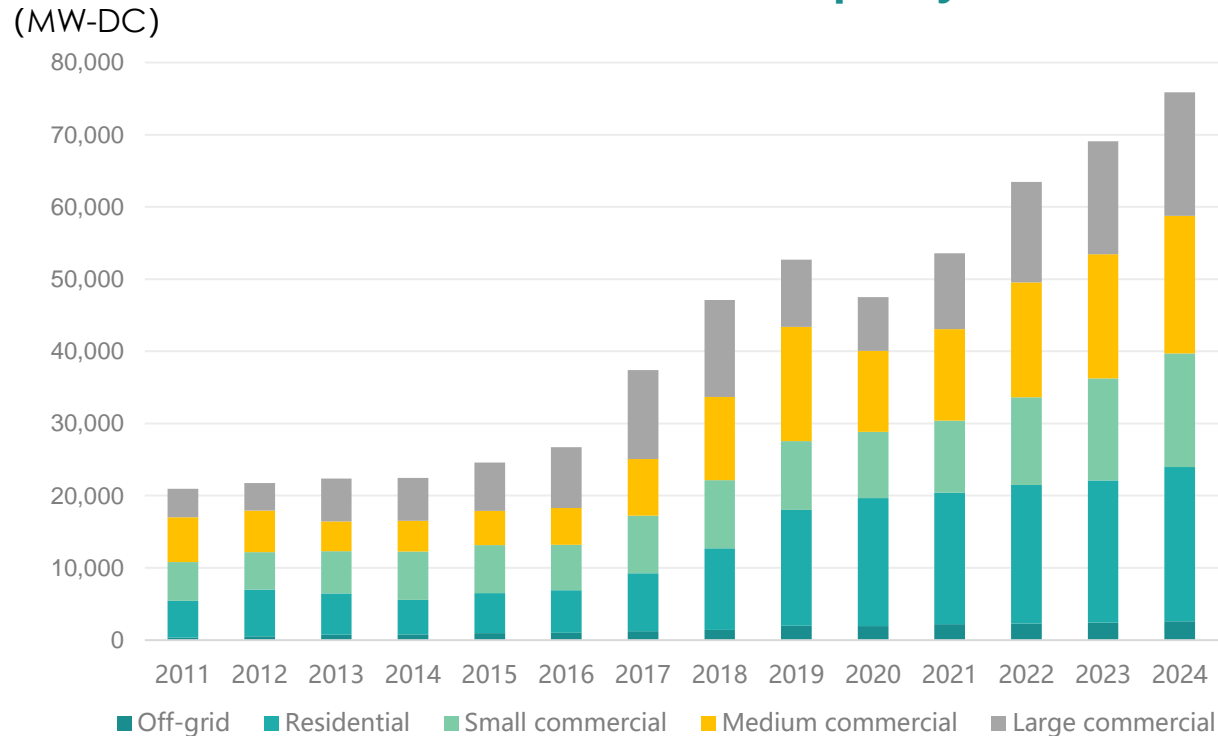
Smart Size, Highest Power



Market Trend --- Increasing DG demands



Distribution market installed capacity forecast



Source: IHS market 2020

Increasing demands of DG market

- ◆ Global DG market demands will increase rapidly with CAGR (20-24) of 9.81%;
- ◆ Residential & Small and Medium commercial systems are the most important application sceneries;
- ◆ High retail energy prices and preferential policies fuel the market growth and support the premium

Customer Demands --- Comprehensive Product Solution



Residential



Commerical



Module

Appearance
Power & Efficiency
Size

System Design

Compatibility
Mechanical Load
Weight

Service

Installation instruction
System solution

O&M

Product warranty
Reliability

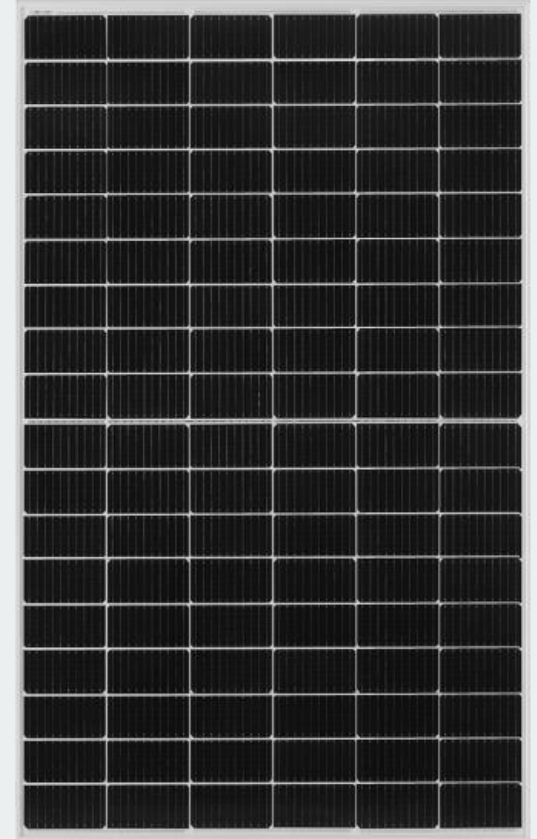
Innovative Product for Roof-top Market

Tiger Pro-54P

Max Power: **415Wp**

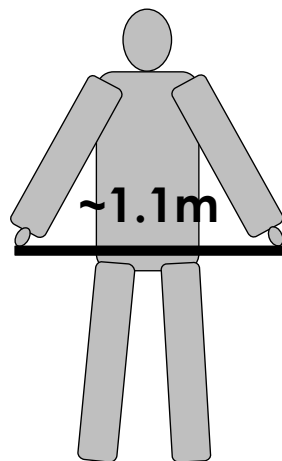
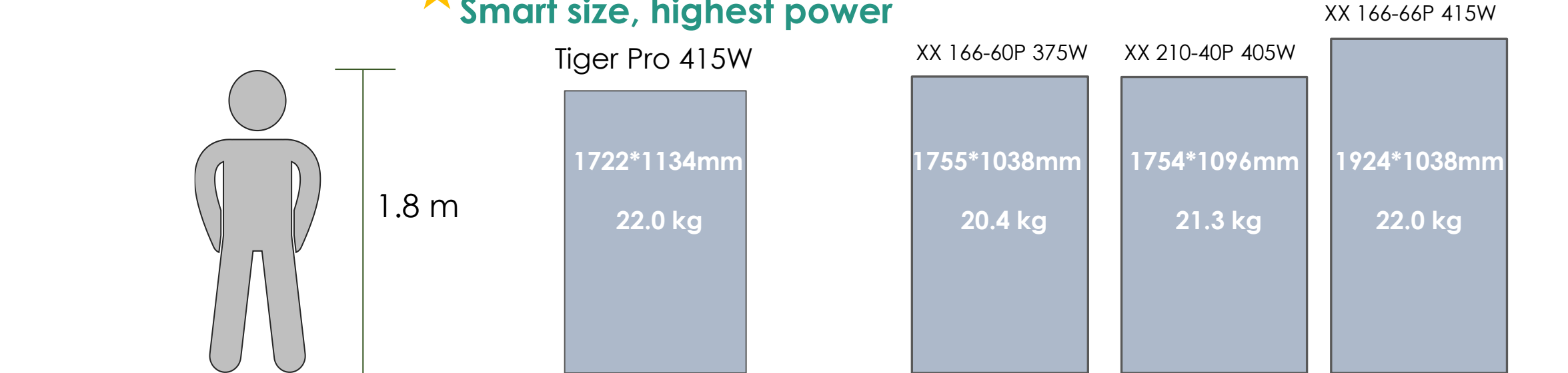
Highest Efficiency: **21.25%**

- Size: 1722*1134*30
- Weight: 22 kg
- Voc: 37.31 V
- Isc: 14.01 A
- Temperature coefficients of Pmax: -0.35%/°C



Technology Innovation --- Human design concept

★ Smart size, highest power



Perfect to handle

- ◆ Length: The module length is around 1.7m, Convenient for manual installation
- ◆ Width: The module width is around 1.1m, Convenient for manual installation
- ◆ Weight: The module weight is 22kg, portable for transporting

Improved Mechanical Load

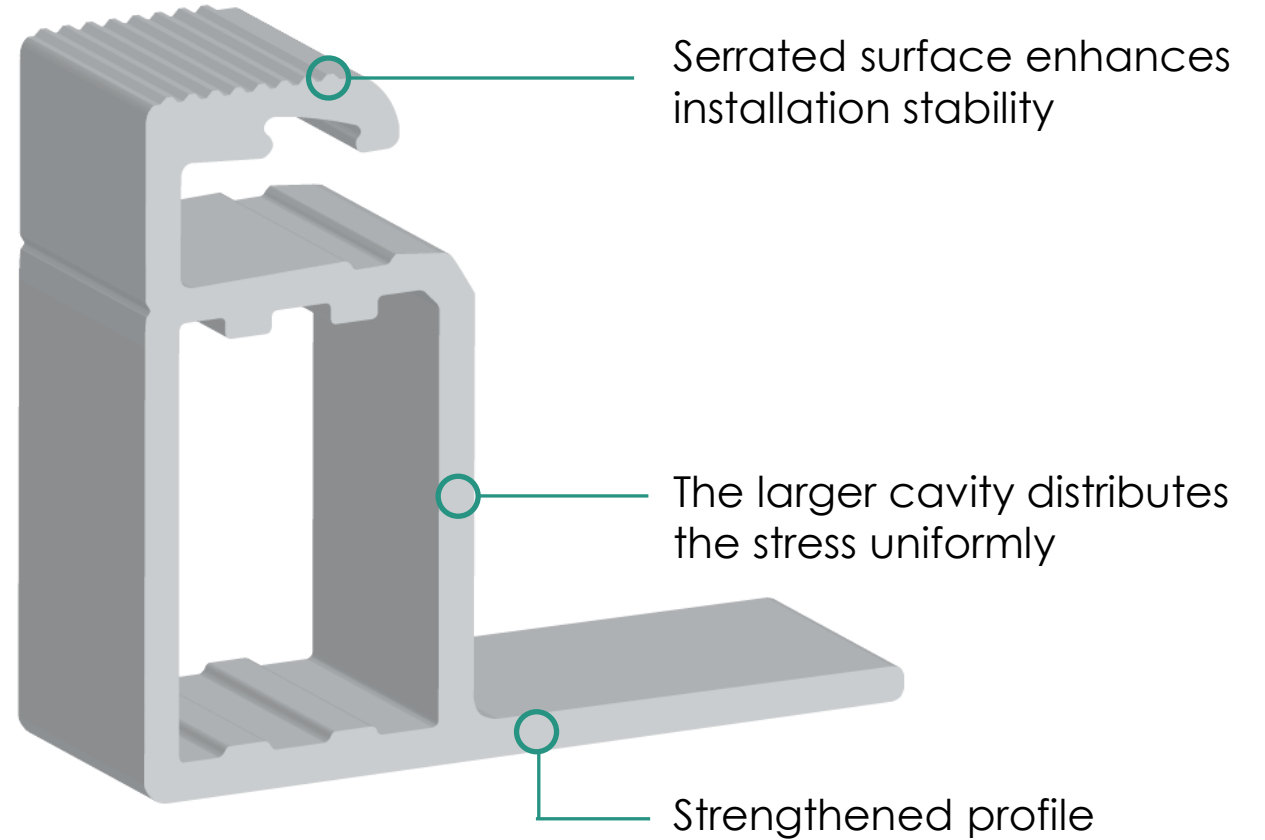


Improved
Frame
Design

Installation
Methods
Evaluation

Reliable
Mechanical
Load

Tiger Pro Frame

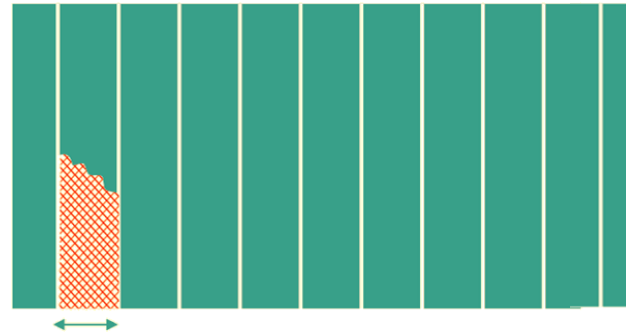


Technology Innovation --- Multi Busbar

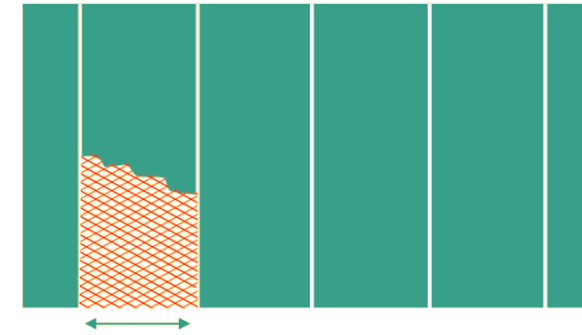
Multi-Busbar Technology

- Cell efficiency increased by 0.4%
- current path decreased by 50%
- Lower micro-crack risk

Tiger Pro

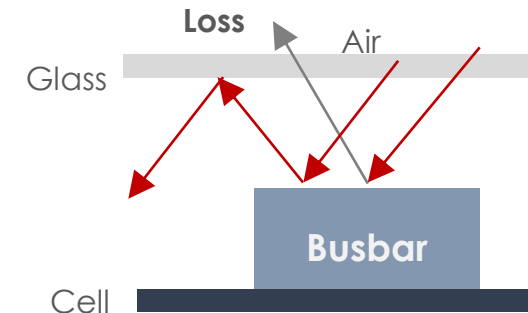
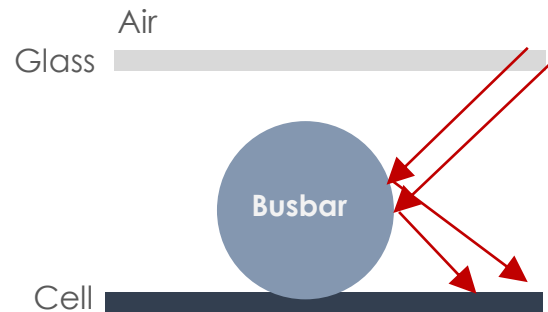


Normal Module



Circular Ribbon

- Improved light utilization
- Better performance when inclined incidence

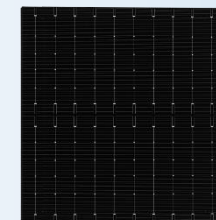


Aesthetics Design



All Black Design

Black Backsheet + Black Frame
(Optional)



Multi Busbar

Thinner Ribbon decreases
the light reflection

Advanced Warranty



15 Year
Product
warranty

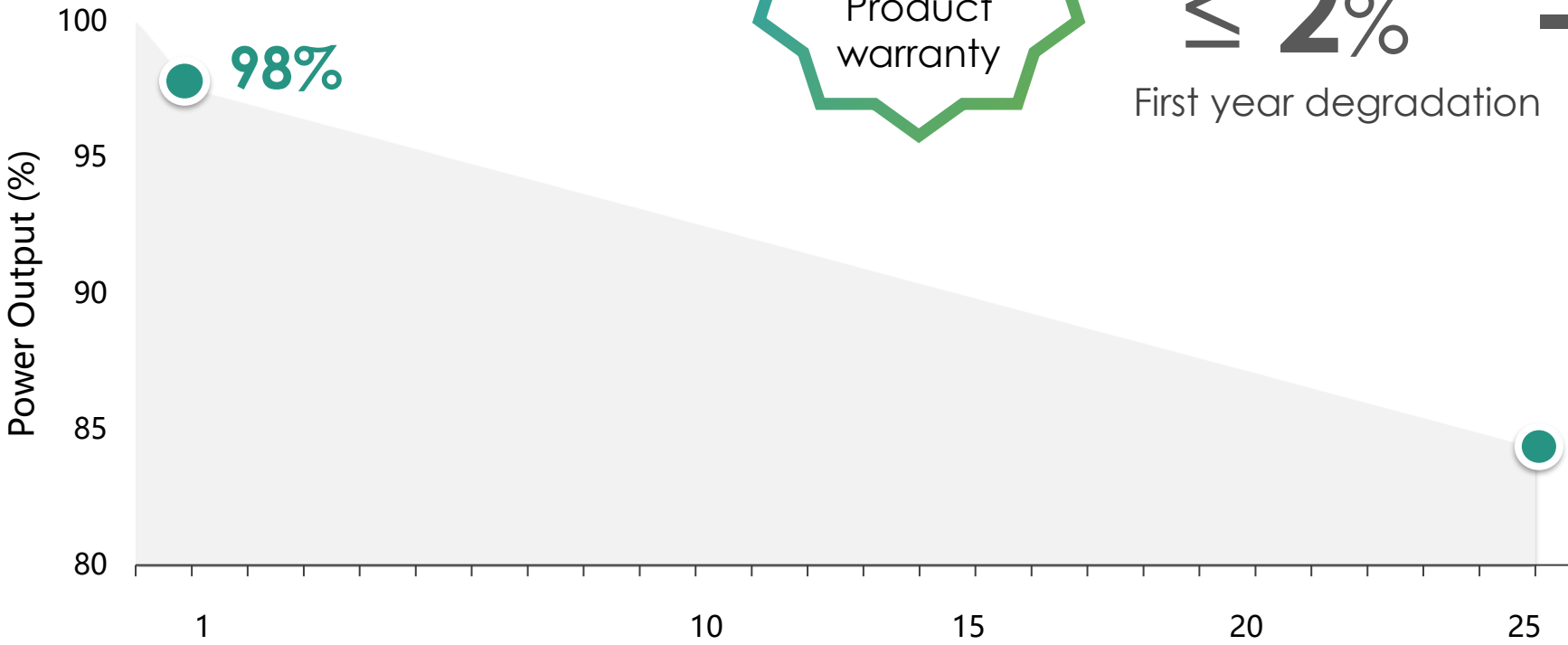
25 -year power warranty

≤ 2%

-0.55%

First year degradation

Linear degradation



Diverse Application



Residential roof

The investment is small; easy to install; state subsidy funds, additional government subsidies, long-term income projects; drive more C&I projects.



C & I roof

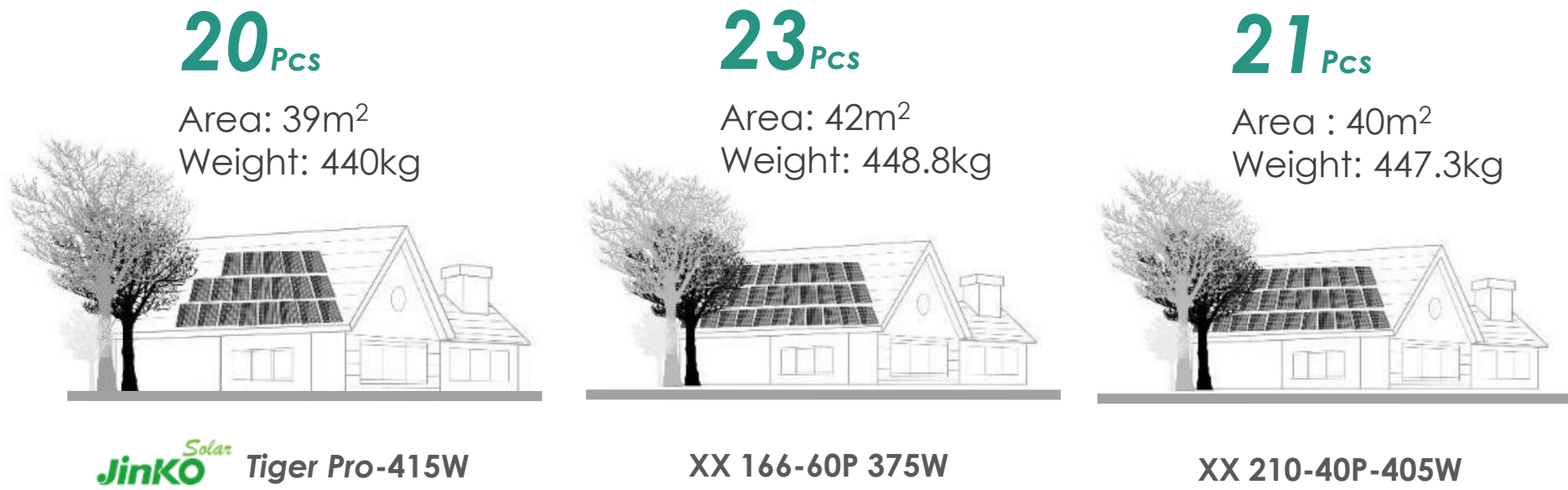
Energy conservation and emission reduction; High electricity consumption and price; larger installed capacity; lower LCOE.



Saving land space and decreasing the total weight

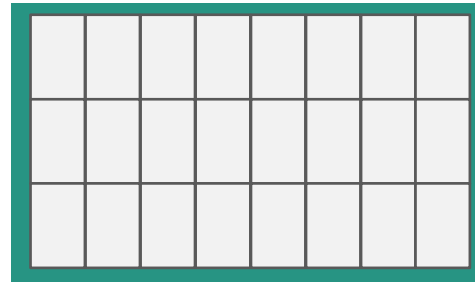
Higher module power & efficiency

* Take certain rooftop photovoltaic system (8.5kW) for example

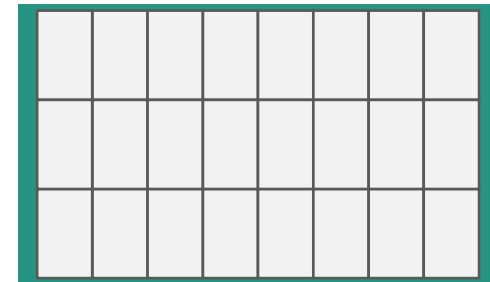


For the same volume, Jinko Tiger Pro module needs fewer blocks, roof area and weight. The saved area also has significant positive effect on avoiding shadows shade.

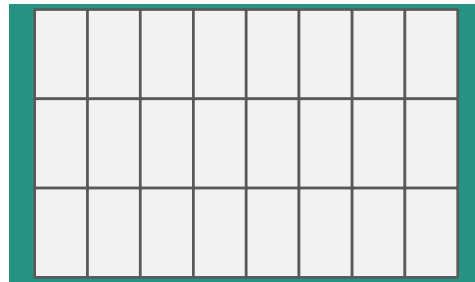
More energy generation with the same roof size



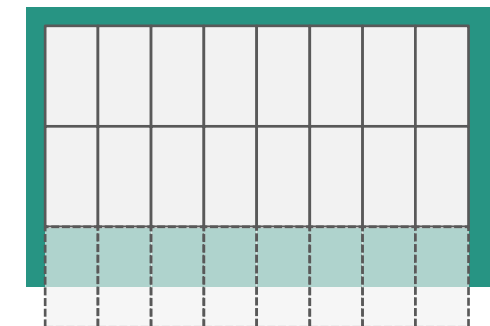
Tiger Pro 415W
24pcs
Total **9.96kW**



XX 210-40P 405W
24pcs
Total 9.72kW



XX 166-60P 375W
24pcs
Total 8.43kW



XX 166-66P 415W
16pcs
Total 6.64kW

Lowest Transportation Fee



Pieces of module per container (pcs) Total power per container (kW)

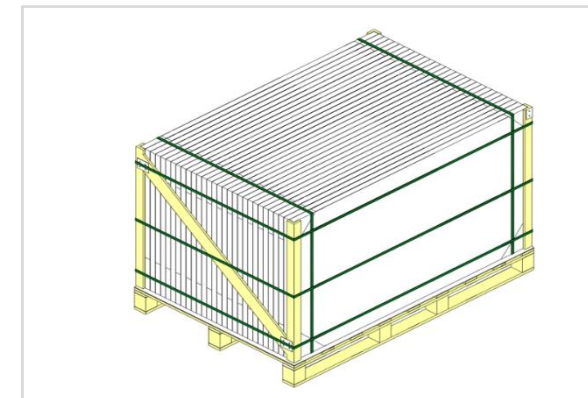
	Pieces of module per container (pcs)	Total power per container (kW)
Jinko Solar Tiger Pro 415W	910	377.65 ↑ 29%
XX 166-60P 375W	780	292.50

Tiger Pro 415W maximize the total power per container to cut down the transportation cost.

Reducing packaging damage risk by optimized packaging design and strengthened support.



keep reasonable operation space, effectively avoid packaging damage during loading and unloading



Internal N shape* support to reduce deformation risk

*N shape support is optional

Lower system cost and higher return for customer



	XX 166-60P 375W	XX 210-40P 400W	Tiger Pro 415w
Inverter	Cost (Baseline)	93.75%	90.36%
fixed tilt	Cost (Baseline)	98.93%	96.64%
cable	Cost (Baseline)	98.99%	98.72%
Installation	Cost (Baseline)	93.75%	90.36%
Others	Cost (Baseline)	98.47%	97.50%

Payback period (years)	Cost (Baseline)	-0.28 (-3 months)	-0.69 (-9 months)
-----------------------------------	----------------------------	------------------------------	------------------------------

* **Project location: Madrid, Spain 100KW(Ac) Project,**

Assumption: 1. Fixed the AC side, and different type of modules are fulfilled in same rooftop
 2. Self-consumption system, the bill of tariff to grid is 0.04USD/kwh

With Tiger Pro, the payback period can be saved maximum up to 9 months compared others

Fully Compatible with Distribution Inverters

MPPT input current

15A+

Isc **14.01A** Voc **37.31V**

- The upgrade of inverters for high current module could totally meet the compatibility demand in the coming H2 2021



* From 2021H2

SUNGROW



Growatt



Thanks!

