

SINGLE PHASE STRING INVERTER

3KW

KEY FEATURES



Enhance Solar System Output

Support high current PV modules with 12A operating current.



Max. Efficiency 97.8%

Max. efficiency 97.8%, Europe 97.1%.



User Friendly

Low weight allows one person installation.
Real-time monitoring with Cloud platform.
Supports one-click inverter configuration.
Supports remote parameter configuration & firmware update.



Higher Reliability

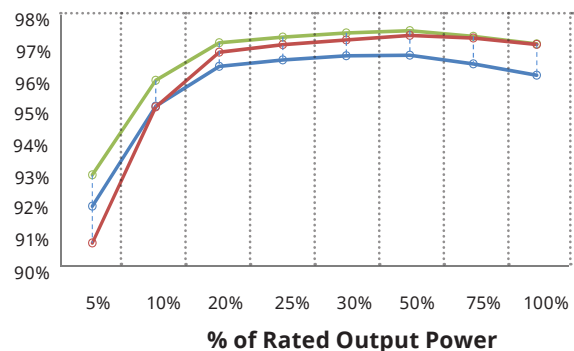
Integrated power module design.
Integrated DC switch.
Natural convection.
IP65.



Standard Warranty, Extension up to 20 Years

CSI-3K-S22002-E EFFICIENCY CURVE

Efficiency



CSI Solar Co., Ltd. is committed to providing high quality solar products, solar system solutions and services to customers around the world. Canadian Solar was recognized as the No. 1 module supplier for quality and performance/price ratio in the IHS Module Customer Insight Survey, and is a leading PV project developer and manufacturer of solar modules, with over 55 GW deployed around the world since 2001.

* For detail information, please refer to Installation Manual.

SYSTEM TECHNICAL DATA

MODEL NAME	CSI-3K-S22002-E
DC INPUT	
Max. DC Input Voltage (V)	600
Start-up DC Input Voltage (V)	60
MPPT Operating Voltage Range (V)	60 - 500
Rated Input Voltage (V)	360
Max. Input Current (A)	12
Max. Short-Circuit Current (A)	15
Number of MPP Trackers	1
Number of DC Inputs	1
AC OUTPUT	
Rated Output Power (W)	3000
Max. Apparent AC Output Power (VA)	3000
AC Grid Connection Type	L / N / PE
AC Nominal Voltage And Range (V)	230
AC Nominal Frequency And Range (Hz)	50 (± 5)
Max. Output Current (A)	13.6
Power Factor (@Rated Output Power)	> 0.99
Displacement Power Factor	0.8 leading to 0.8 lagging
Total Harmonic Distortion (THDi)	< 3 %
EFFICIENCY	
Max. Efficiency	97.8 %
European Efficiency	97.1 %
MPPT Efficiency	99.9 %
SAFETY & PROTECTION	
DC Switch	Integrated
Anti-Islanding Protection	Integrated
DC Reverse-Polarity Protection	Integrated
Insulation Monitoring	Integrated
AC Over Voltage Protection	Integrated
AC Over Current Protection	Integrated
AC Short-Circuit Protection	Integrated
Residual Current Protection	Integrated
Overvoltage Class	II(DC), III(AC)
GENERAL PARAMETERS	
Dimensions (W x H x D, mm)	308 x 357 x 136
Net Weight (kg)	8.2
Installation Method	Wall-mounted
DC Connection Type	MC4
AC Connection Type	Connector
Communication	WIFI / RS485
Display	LED Indicator
Cooling	Natural Convection
Protection Degree	IP65
Operating Ambient Temperature Range (°C)	-25 ~ 60 (> 45, derating operation)
Relative Humidity (Non-Condensing)	0 % ~ 100 %
Max. Operating Altitude (m)	4000 (> 3000, derating operation)
Topology	Transformerless
Night Power Consumption (W)	< 1
Safety and EMC	IEC 62109, IEC 61000-6-1, IEC 61000-6-3
Grid Connection Standard	EN50549-1

*Any system with a DC/AC ratio being less than 1.5 is within our warranty scope. Please contact local CSI Solar technical support for further confirmation if otherwise.

The specifications and key features contained in this datasheet may deviate slightly from our actual products due to the on-going innovation and product enhancement. CSI Solar Co., Ltd. reserves the right to make necessary adjustment to the information described herein at any time without notice.
Caution: For professional use only. The installation and handling of PV equipment requires professional skills and should only be performed by qualified professionals. Please read the safety and installation instructions before using the product.

CSI Solar Co., Ltd.

199 Lushan Road, SND, Suzhou, Jiangsu, China, 215129, www.csisolar.com, support@csisolar.com

August 2021. All rights reserved, PV Inverter Product Datasheet V1.0_EU