



english version



IRFTS[®]
SOLAR SOLUTIONS

IRFTS UMBRA SOLAR

SUNSHADE - ENERGY PRODUCTION AND SUN PROTECTION

Designed for
Low-Energy Building

SAVING
MONEY!
SELF-CONSUMPTION

PERSONNALISATION ⁽¹⁾



REDUCTION OF
AIR CONDITIONING
NEEDS

ENERGY
OPTIMIZATION

PERFECT SOLUTION
FOR LOW ENERGY
BUILDING

EMBELLISHMENT
OF THE BUILDING

COMPATIBLE WITH
MICRO-INVERTER

KNOW
MORE :



ASSEMBLY
INSTRUCTIONS :



CONTACT :

IRFTS

26, rue du 35^{ème}
Régiment d'Aviation
69500 BRON
(FRANCE)

+ 33 (0)4 78 38 83 10

info@irfts.com

IRFTS UMBRA SOLAR sunshade **protects** the **openings** (*door, bay window ...*) of house, commercial or industrial building from discomfort to sunlight.

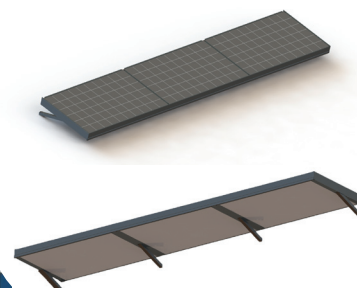
IRFTS UMBRA SOLAR also provides a sleek and **aesthetic finish** for **Low-Energy Building**.

A slope of 5° ensures the **right amount of lighting** such as temperature throughout the year.

IRFTS UMBRA SOLAR solution is compatible with all types of **60 cells 6''** ^{(2) (3)} PV framed module to convert sun radiation into electricity and **to create some new income streams**.

Only 3 references for any configurations and 2 versions are available (with or without back and front trim) , parts can easily been put together to create the sunshade of your choice!

LENGTH CAN BE ADJUSTED ACCORDING TO **YOUR REQUIREMENTS !**



www.irfts.com

IRFTS UMBRA SOLAR Sunshade

Compatible with all types PV framed modules ⁽²⁾ ⁽³⁾

Technology

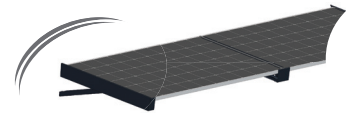
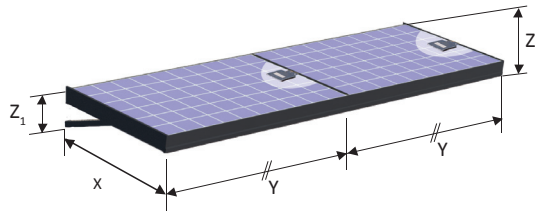
- The adjustable structure is made of aluminium using a join and cut free solution.
- The best solar protection is provided by a 5 degrees modules slope. Energy efficiency is optimized throughout the year regardless of the area.
- Integrated fixation for micro-inverter.

Applications

- **Residential house - commercial building - public building - Industrial building** - All openings (*windows, doors, bay windows, hallways ...*) are protected from the solar rays whilst the production of electricity is optimised.



IRFTS UMBRA SOLAR



Version without back and front trim

Dimensions

- X : 1020 mm
- Y : 1688 mm
- Z₁ : 290 mm
- Z₂ : 210 mm


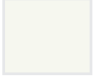
Installation

- Wall mounted

Module Orientation

- Landscape

Colors

- Anthracite matt granulated grey (RAL 7016)  OR white (RAL 9010) 

Material

- Aluminium

Safety & aestheticism

- Integrated passage of the cables for Health and Safety
- Available with or without back and front trim

(1) Under panel cover is not included in IRFTS UMBRA SOLAR kit only with back and front trim. (2) PV Modules are not included with IRFTS UMBRA SOLAR kit. (3) Compatible with 60 cells - 6 " framed PV modules with a length from 1635 to 1680 mm, width : 980 to 1001 mm, thickness : 30 to 50 mm.

IRFTS is member of :



Your nearest contact :



www.irfts.com